

Office Light Kit Installation Guide

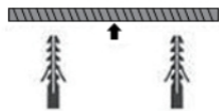
Table of Contents

| | |
|-------------------------------|---|
| 60GHz Occupancy Sensor | 1 |
| Illumination Sensor | 2 |
| Switch Pannel | 3 |
| Intelligent Scene Panel | 4 |
| Mini LoRaWAN Gateway | 5 |

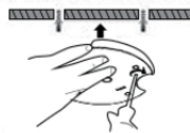
60GHz Occupancy Sensor

Installation

Step1: Screw in the ceiling based on the installation direction.



Step2: Fix the back cover to the ceiling with screws.

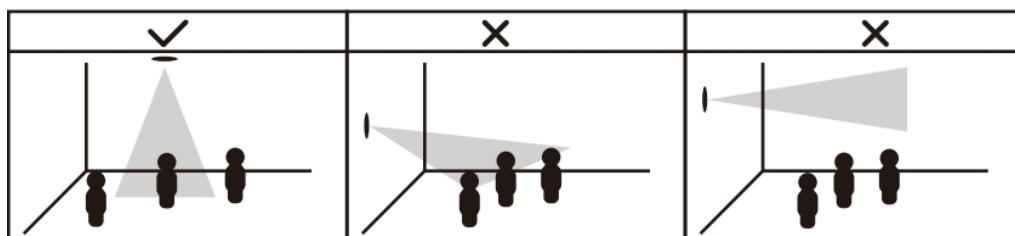


Step3: Install the body clockwise on the back cover clips, then tighten it.

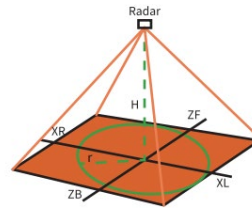


Installation Note

- Top mounted. Firstly, screw the base to the wall before hanging the body on the base. The installation height should be no less than 2 meters.

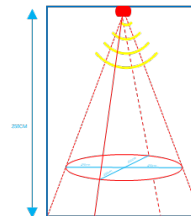


- Installation direction marking on the base, please adjust the appropriate angle according to the actual demand.



Default occupancy detection range

- Height: 250cm (2.5m)
- Left and right distance: 900cm
- Front and back distance: 900cm

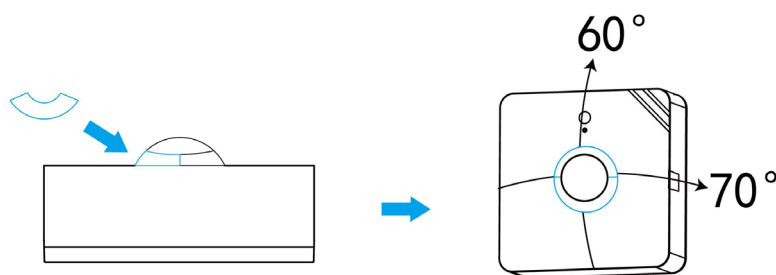


Illumination Sensor

Blocking Sticker Paste

For applications requiring detection angle control, such as work station, in order to prevent accidental detection of people around the station, please paste the blocking stickers on the sensor along the bottom of the PIR lens for range shielding. Each sticker can cover about a 180° range. After paste the stickers along the bottom of the lens and wrapping the sensor 360°, the detection area has changed to 70° Horizontal, 60° Vertical.

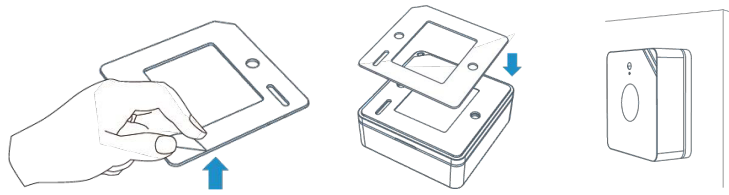
Note: The detection area may be affected by manual pasting, potentially introducing errors.



Installation

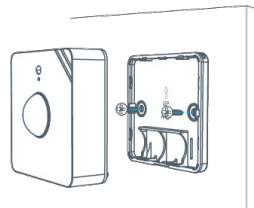
1. 3M Tapes Fix

Paste 3M tape to the back of the device, then tear the other side and place it on a flat surface.



2. Screw Fix

Remove the back cover of the device, screw the wall plugs into the wall and fix the cover with screws on it, then install back the device.



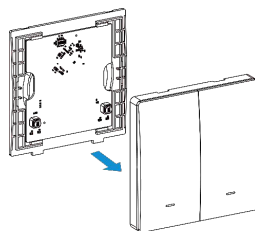
Note

- Adjust the installation direction according to detection area requirement.
- WS202 can be mounted on a wall or ceiling. It's recommended to install at 1.5~2.5m from the floor.
- Ensure the detection area does not have moving objects like waving trees and fans.
- Ensure the detection area is not blocked by curtains or barriers.

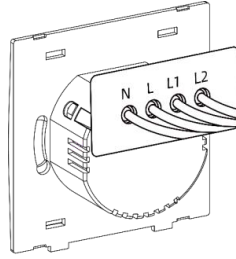
Switch Pannel

Installation

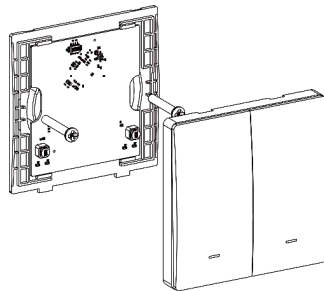
1. Ensure the circuit has been shut off and the old switch has been taken off.
2. Open the front panel of WS50x switch.



3. Connect corresponding wires to the WS50x switch.



4. Fix the WS50x switch to the switch box with mounting screws, then fix the front panel back to the device.



Intelligent Scene Panel

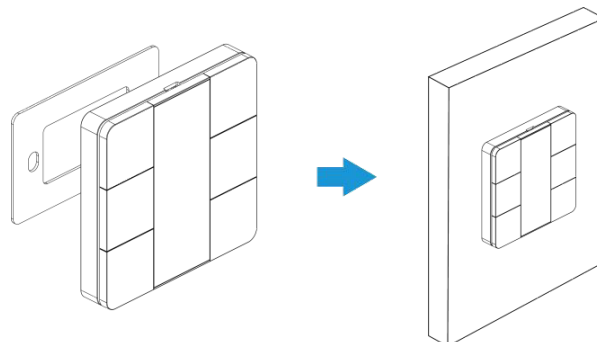
Installation

WS136 & WS156 can be placed on the desktop directly. If it needs to be fixed, please try below installation methods.

1. Fixed by 3M Tapes

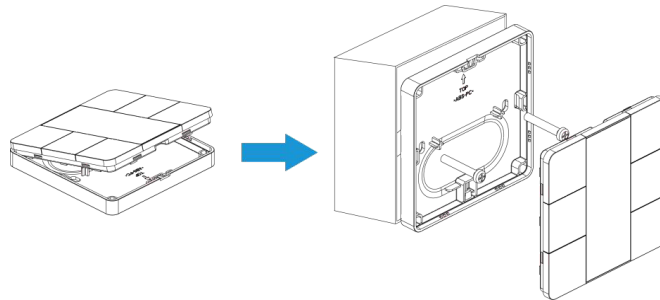
Paste 3M tape to the back of the panel, then tear the other side and place it on a flat surface.

Please note the screen direction when installing.

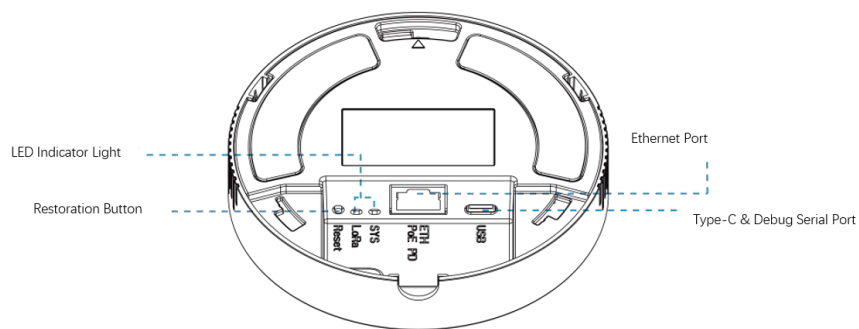


2. Fixed by 86 Box

Remove the back cover of the panel, screw the back cover to the 86 box with two M4 mounting screws, then install back the panel. Please note the screen direction when installing.



Mini LoRaWAN Gateway



LED Instruction

| LED | Status | Light Status | Description |
|------|---------------|--------------|--|
| SYS | System status | off | The system is booting up |
| | | Green light | Constant light: System is operating normally |
| | | Red light | System error |
| LoRa | LoRa status | off | Packet forwarding mode inactive |

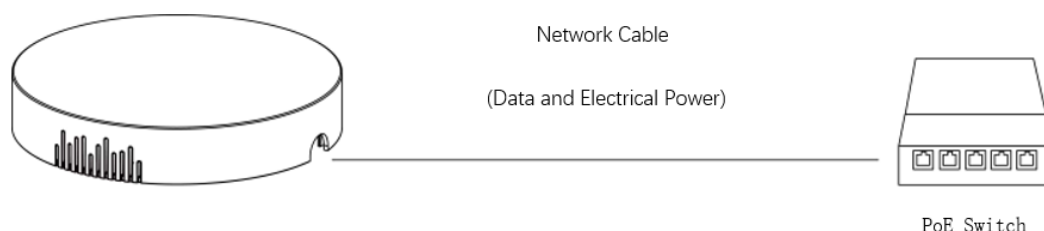
| | | | |
|-----|--|----------------|-------------------------------|
| | | Green light | Packet forwarding mode active |
| ETH | Link status (orange light) | off | Not connected/ Disconnect |
| | | Constant light | Connected |
| | | flickering | Data is transmitting |
| | Data transmission status (green light) | Constant light | 100 Mbps mode |
| | | off | Other transmission rate mode |

Restoration Button

| Function | Description | |
|-------------------------------|-----------------------------------|---|
| | Light Status | Operation Guidance |
| Reset to the factory settings | Constant light | Press and hold the restoration button for more than 5 seconds |
| | Green constant light → flickering | Release the button and wait |
| | Off → constant light | Restore gateway to factory settings |

Power Supply for Products

The gateway supports 802.3af standard PoE or Type-C interface (5V, 1A) power supply. If both are connected at the same time, the PoE power supply is preferred.



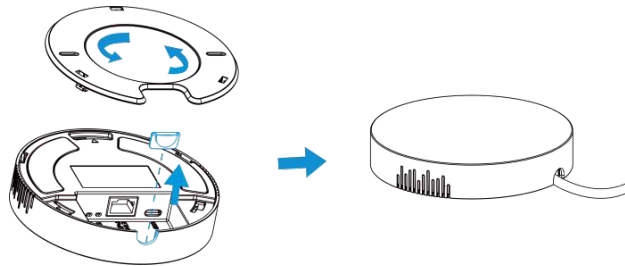
Note: You must connect the network cable at the gateway before connecting it to the PoE power supply device, otherwise it may damage the PoE device or the gateway.

Installation

The gateway supports desktop placement, wall or ceiling mounting. Before installation, please ensure that the wiring is correct, and the product is configured and powered off.

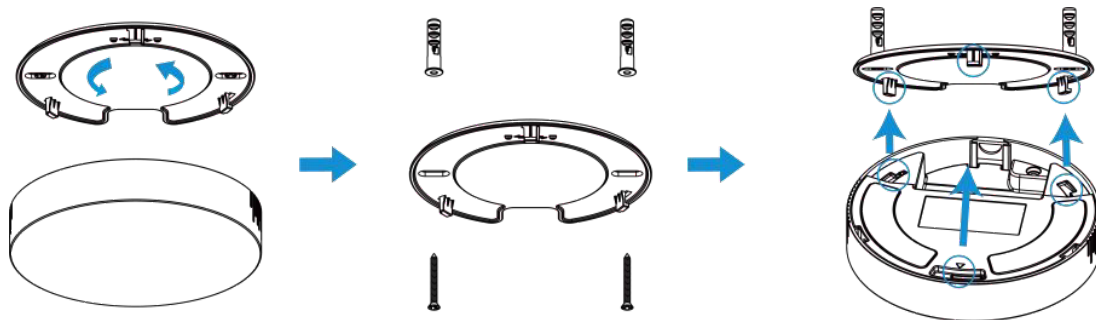
1. Desktop Placement

To use the device, unscrew the mounting plate counterclockwise on the back and place it on a desktop.



2. Wall or Ceiling Mounting

Remove the mounting plate on the back of the device counterclockwise. Drill two holes in the wall or ceiling, and then drill in the expansion bolts. Fasten the mounting plate to the wall with wall mounting screws.



3. Align the device with the mounting plate and turn it clockwise to snap it in.

