

Fall Detection Kit Installation Guide

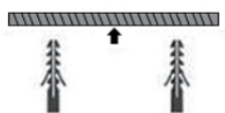
Table of Contents

60GHz Human Fall Detector	1
Mini LoRaWAN Gateway	2

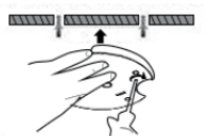
60GHz Human Fall Detector

Installation

Step1: Screw in the ceiling based on the installation direction.



Step2: Fix the back cover to the ceiling with screws.

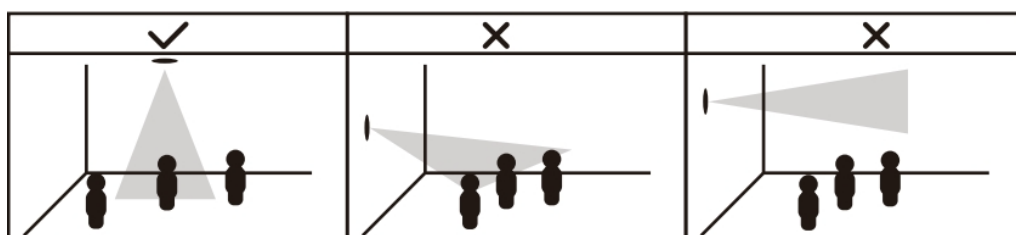


Step3: Install the body clockwise on the back cover clips, then tighten it.

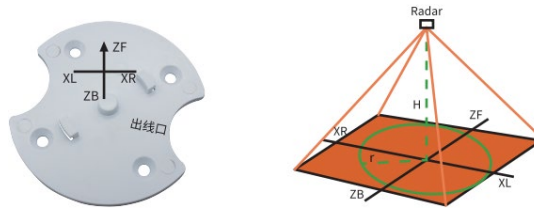


Note

- Top mounted. Firstly, screw the base to the wall before hanging the body on the base. The installation height should be no less than 2 meters, and the fall detection only works when single person fall.

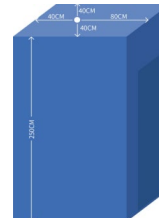


- Installation direction marking on the base, please adjust the appropriate angle according to the actual demand.

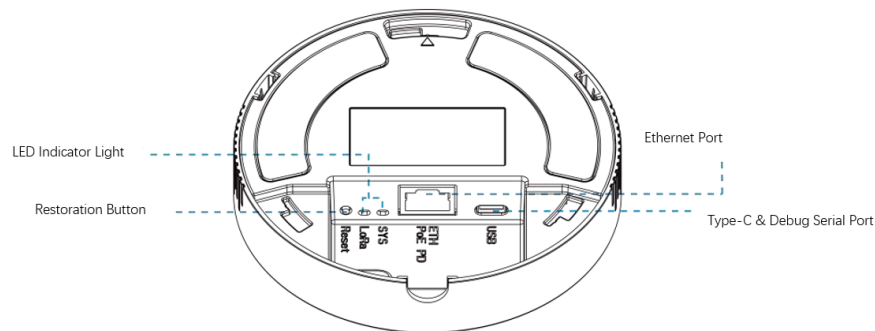


Default fall detection range

- Height: 250cm (2.5m)
- Left and right distance: 80cm
- Front distance: 80cm
- Back distance: 40cm



Mini LoRaWAN Gateway



LED Instruction

LED	Status	Light Status	Description
SYS	System status	off	The system is booting up
		Green light	Constant light: System is operating normally
		Red light	System error
LoRa	LoRa status	off	Packet forwarding mode inactive
		Green light	Packet forwarding mode active
ETH	Link status (orange light)	off	Not connected/ Disconnect

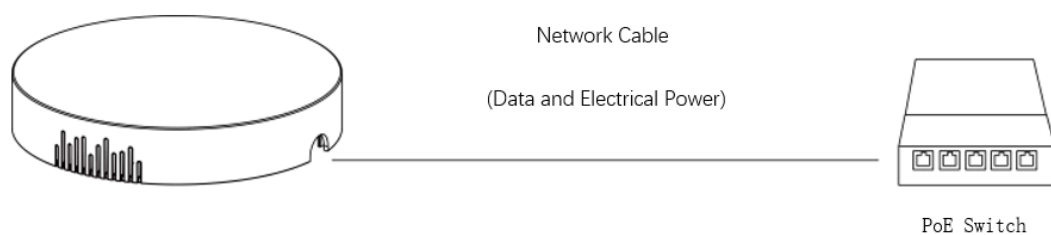
		Constant light	Connected
		flickering	Data is transmitting
	Data transmission status (green light)	Constant light	100 Mbps mode
		off	Other transmission rate mode

Restoration Button

Function	Description	
	Light Status	Operation Guidance
Reset to the factory settings	Constant light	Press and hold the restoration button for more than 5 seconds
	Green constant light → flickering	Release the button and wait
	Off → constant light	Restore gateway to factory settings

Power Supply for Products

The gateway supports 802.3af standard PoE or Type-C interface (5V, 1A) power supply. If both are connected at the same time, the PoE power supply is preferred.



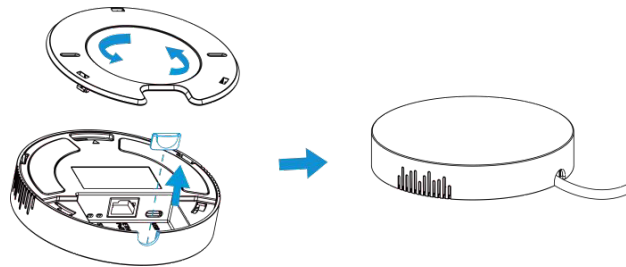
Note: You must connect the network cable at the gateway before connecting it to the PoE power supply device, otherwise it may damage the PoE device or the gateway.

Installation

The gateway supports desktop placement, wall or ceiling mounting. Before installation, please ensure that the wiring is correct, and the product is configured and powered off.

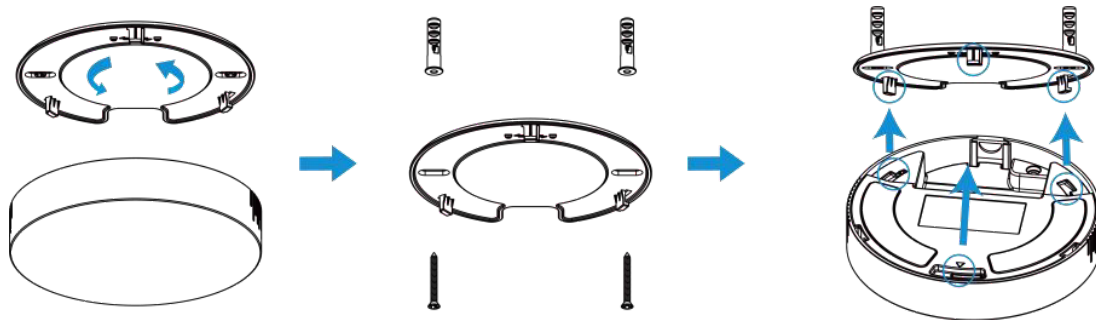
1. Desktop Placement

To use the device, unscrew the mounting plate counterclockwise on the back and place it on a desktop.



2. Wall or Ceiling Mounting

Remove the mounting plate on the back of the device counterclockwise. Drill two holes in the wall or ceiling, and then drill in the expansion bolts. Fasten the mounting plate to the wall with wall mounting screws.



3. Align the device with the mounting plate and turn it clockwise to snap it in.

