

Smart Toilet Kit Installation Guide

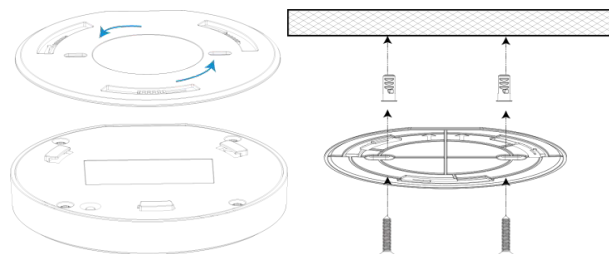
Table of Contents

LiDAR Occupancy Detector.....	1
Bathroom Odor Detector.....	3
60GHz Human Fall Detector.....	5
Mini LoRaWAN Gateway.....	6

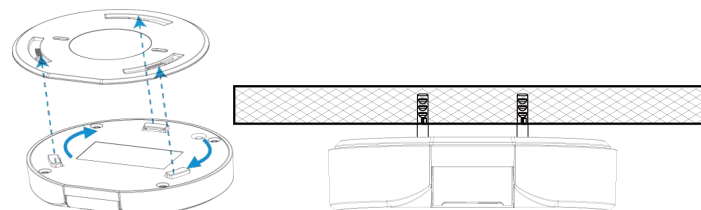
LiDAR Occupancy Detector

Ceiling Mount

1. Take off the mounting plate on the back of the device, drill 2 holes on the ceiling according to the mounting plate, then fix the wall plugs into the ceiling and fix the mounting plate to the wall plugs with screws. The mounting plate can also be fixed by 3M tapes.



2. Turn the device clockwise to lock it to the mounting plate. The angle of rotation can be adjusted according to your requirements (at maximum of 15°).

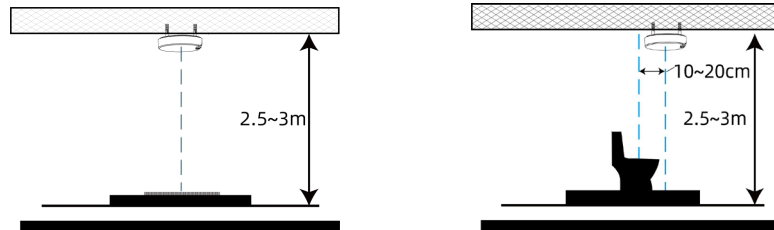


Installation Location

- The installation height should be 2.5m to 3m.
- The sensor part should face the front of toilet and the sensor should be installed

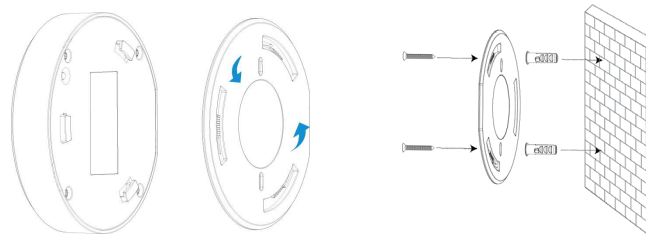
horizontally to the ceiling; sensor angle is set to 0°.

- Keep the center of device 10 to 20 cm away from the center of toilet.
- It is suggested to enable test mode to check if opening and closing door will affect the detection results and then adjust the mounting location accordingly.

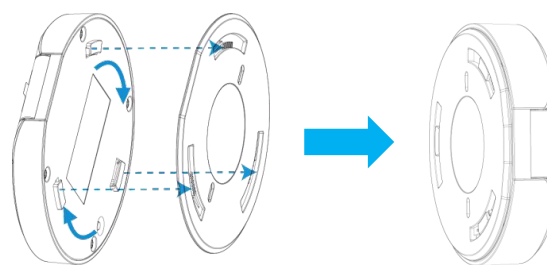


Wall Mount

1. Take off the mounting plate on the back of the device, drill 2 holes on the wall according to the mounting plate, then fix the wall plugs into the wall and fix the mounting plate to the wall plugs with screws. The mounting plate can also be fixed by 3M tapes.



2. Turn on the device clockwise to lock it to the mounting plate. The angle of rotation can be adjusted according to your requirements (at maximum of 15°).



Installation Location

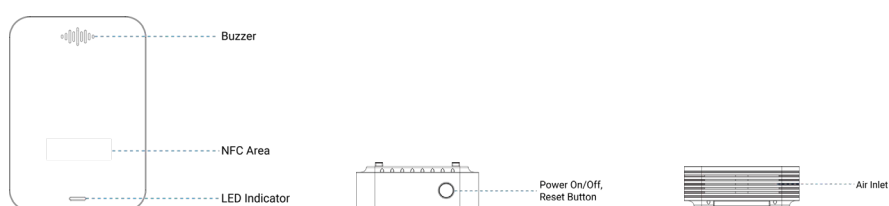
- Locate the device exactly on the wall and at the back of the flush toilet, and the sensor part should face downwards.
- Do not make the sensor face to door directly or cover the door into detection area when adjusting the sensor angle.
- The installation height should be higher than the height of standing toilet lid to avoid potential influence on the detection accuracy.
- It is suggested to enable test mode to check if opening and closing door will affect the

detection results and then adjust the mounting location accordingly.

Note

- Avoid strong light, like direct sunlight or IR LED, in the detection area.
- Do not install the device close to glass or mirror.
- After installation and adjustment, please remove the protective film.
- Keep the device away from the water or other liquids to prevent damage to the device.
- Do not modify, disassemble, strike or crush the device.
- Keep the device out of children's reach.

Bathroom Odor Detector

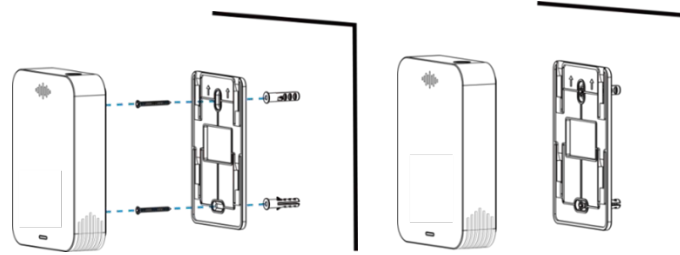


LED and Button Patterns

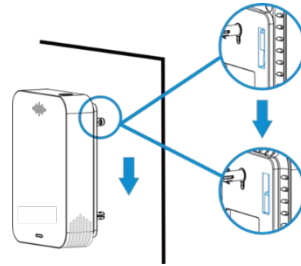
Function	Action	LED (Enable)
Power ON/OFF	Press and hold the button for more than 3 seconds.	Power On: Off → On
		Power Off: On → Off
Check On/Off Status	Quick press the power button once.	Device On: Blink Once
		Device Off: Off
Reset to Factory Default	Press and hold the reset button for more than 10 seconds	Quickly Blinks
Threshold Alarm	When any concentration of NH ₃ or H ₂ S exceeds the threshold	Quickly Blinks

Installation

1. Take off the mounting bracket on the back of the device, drill 2 holes on the wall according to the wall mounting bracket, and then fix the wall plugs into the wall. It's suggested to install the device in the height of human breath which is a way from ground about 4 to 6 feet.
2. Fix the mounting bracket to the wall plugs with screws, and note the bracket should not be installed upside down.



3. Hang the device to the bracket.



Locations to avoid

- In an area expect for the operating temperature or larger temperature difference.
- Damp or very humid location expect for operating humidity (0 to 95%).
- The place close to heat source and even sunlight.
- In any outdoor places.
- Dusty or dirty environments may block the air inlets.
- Behind metal objects and obstacles which affect the LoRaWAN® transmission.
- The place with lots of electromagnetic interfaces.
- The place where strong vibration may happen or easy to be subjected to physical shock.
- Next to a door or window or any air ventilation openings like ventilation fans, bents, etc.
- The places spraying alcohol, perfume, fresheners, hair spray, gasoline, paint and other aerosols.

Detector Maintenance

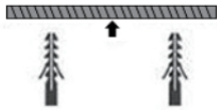
- The working life of the detector is 3 years, remember to replace the device after then.
- Avoid exposing the device to NH₃ and H₂S with high concentrations over a long period time, or it may damage the device and decrease the performance.
- The newly decorated or re-decorated room should be ventilated for some time before installing the detector.
- To ensure the air inlets are not blocked, wipe the device with a clean dry cloth, do not use a very wet cloth, alcohol, harsh chemicals or detergents which may damage the detector.
- Do not paint or cover the device, which may block the air inlets and interface.
- Do not modify, disassemble, strike or crush the device, which will cause the fault alarms.
- During the transportation and storage, keep out of direct sunlight, keep the temperature

within 35°C and not more than 55°C, and keep the humidity not below 15%RH.

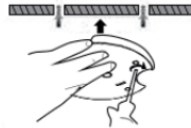
60GHz Human Fall Detector

Installation

Step1: Screw in the ceiling based on the installation direction.



Step2: Fix the back cover to the ceiling with screws.

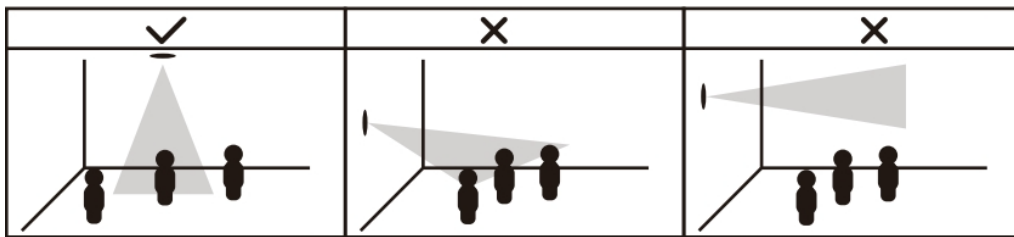


Step3: Install the body clockwise on the back cover clips, then tighten it.

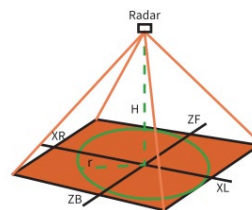


Note

- Top mounted. Firstly, screw the base to the wall before hanging the body on the base. The installation height should be no less than 2 meters, and the fall detection only works when single person fall.

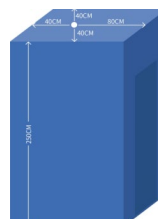


- Installation direction marking on the base, please adjust the appropriate angle according to the actual demand.

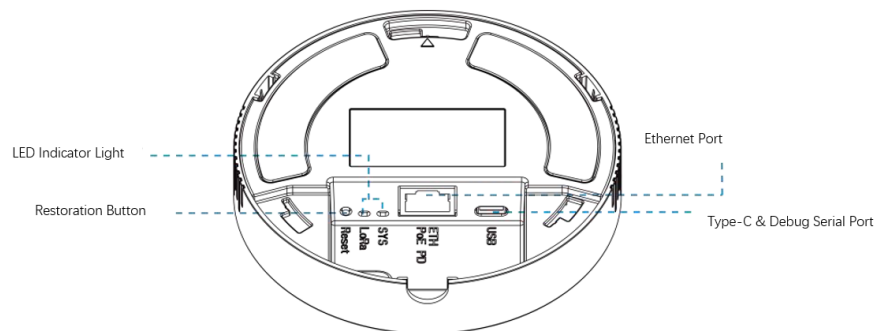


Default fall detection range

- Height: 250cm (2.5m)
- Left and right distance: 80cm
- Front distance: 80cm
- Back distance: 40cm



Mini LoRaWAN Gateway



LED Instruction

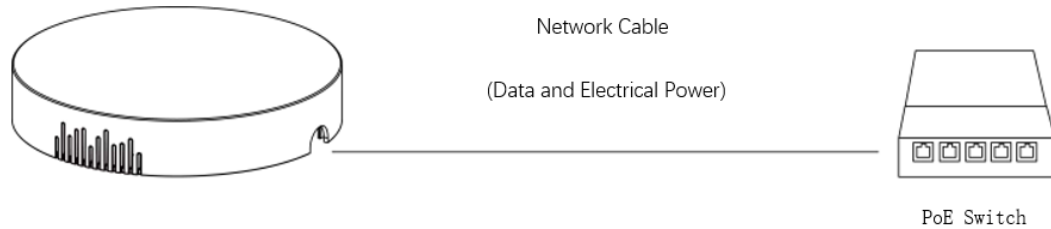
LED	Status	Light Status	Description
SYS	System status	off	The system is booting up
		Green light	Constant light: System is operating normally
		Red light	System error
LoRa	LoRa status	off	Packet forwarding mode inactive
		Green light	Packet forwarding mode active
ETH	Link status (orange light)	off	Not connected/ Disconnect
		Constant light	Connected
		flickering	Data is transmitting
	Data transmission status (green light)	Constant light	100 Mbps mode
		off	Other transmission rate mode

Restoration Button

Function	Description	
	Light Status	Operation Guidance
Reset to the factory settings	Constant light	Press and hold the restoration button for more than 5 seconds
	Green constant light → flickering	Release the button and wait
	Off → constant light	Restore gateway to factory settings

Power Supply for Products

The gateway supports 802.3af standard PoE or Type-C interface (5V, 1A) power supply. If both are connected at the same time, the PoE power supply is preferred.



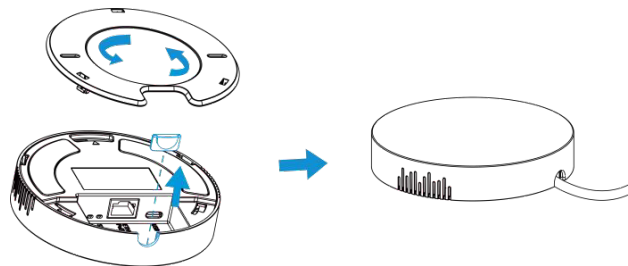
Note: You must connect the network cable at the gateway before connecting it to the PoE power supply device, otherwise it may damage the PoE device or the gateway.

Installation

The gateway supports desktop placement, wall or ceiling mounting. Before installation, please ensure that the wiring is correct, and the product is configured and powered off.

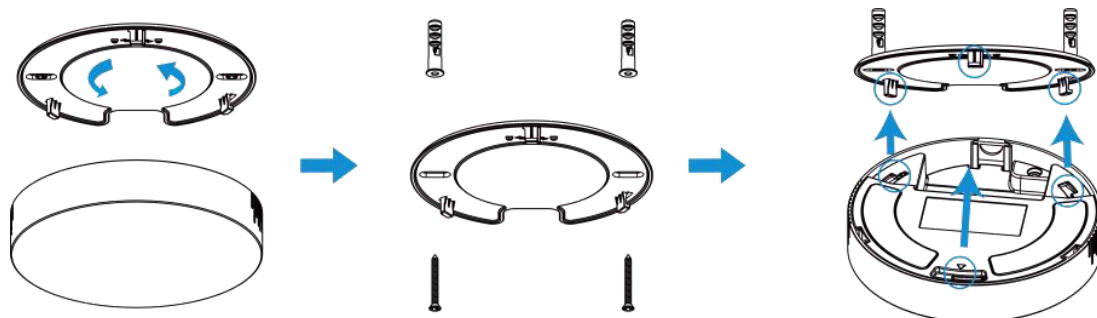
1. Desktop Placement

To use the device, unscrew the mounting plate counterclockwise on the back and place it on a desktop.



2. Wall or Ceiling Mounting

Remove the mounting plate on the back of the device counterclockwise. Drill two holes in the wall or ceiling, and then drill in the expansion bolts. Fasten the mounting plate to the wall with wall mounting screws.



3. Align the device with the mounting plate and turn it clockwise to snap it in.

