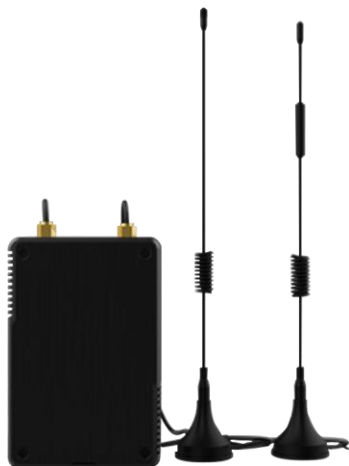




Product Description



It supports not only multiple backhaul backups with Ethernet, Wi-Fi, and cellular but also has integrated mainstream network servers (such as TTI, ChirpStack, etc.) and a built-in network server and Neuron IoT Cloud for easy deployment.



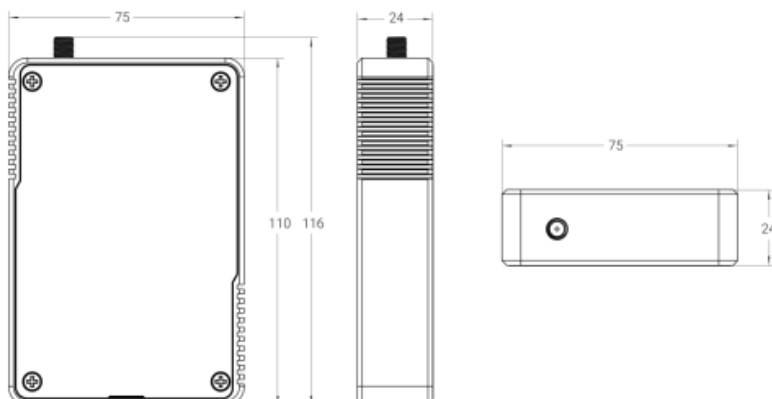
Product Features

- Quad-core industrial processor with big Memory.
- 8 half-duplex channels.
- Multi backhaul connectivity backups with Ethernet, cellular (4G/3G), and Wi-Fi.
- Detecting and analyzing the noise level and providing an intuitive diagram for deployment
- Built-in network server and MQTT/HTTP/HTTPSAPI for easy integration.
- Supporting BACnet/IP to easily integrate LoRaWAN® data into BMS system.



Product Dimensions

Unit: mm





Specifications

CPU	Quad-core 1.3 GHz, 64-bit ARM Cortex-A35
Memory	512 MB DDR3 RAM
Flash	8 GB eMMC
Extendable Storage	1 × Micro SD Slot (Internal)
Antenna Connector	1 × 50 Ω SMA Connector (Center PIN: SMA Female)
Channel	8 (Half-duplex)
Frequency Band	CN470/IN865/EU868/RU864/US915/AU915/KR920/AS923-1&2&3&4
Sensitivity	-140 dBm Sensitivity @292bps
Output Power	27 dBm Max
Protocol	V1.0 Class A/Class B/Class C and V1.0.2 Class A/Class B/Class C
Network Protocol	PPPoE, SNMP v1/v2c/v3, TCP, UDP, DHCP, DDNS, HTTP, HTTPS, DNS, ARP, SNTP, Telnet, SSH, MQTT, BACnet/IP, etc.
App	Python SDK, Node-RED
Power Input	1. 1 × 802.3 af PoE Input 2. 5V, 2A by Type-C
Power Consumption	Typical 1.8 W, Max 6.9 W

