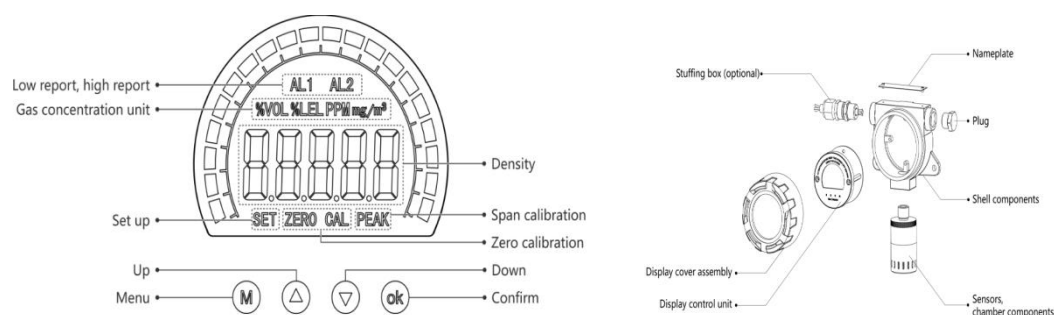


# Gas Detection Kit Installation Guide

## Table of Contents

Gas Detector.....	1
Gas Alarm Control Panel .....	4

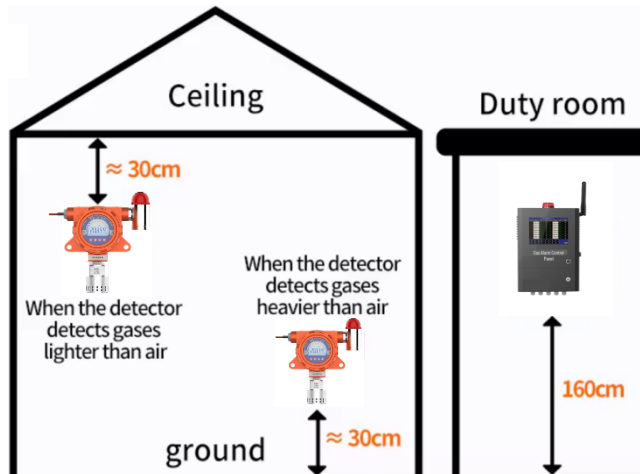
## Gas Detector



The detector's location affects how well it detects. The location should be chosen based on the density of the gas leak point, the proportion of the gas to be measured, nearby buildings, wind direction, and annual weather patterns. In indoor areas, doors and windows should also be considered.

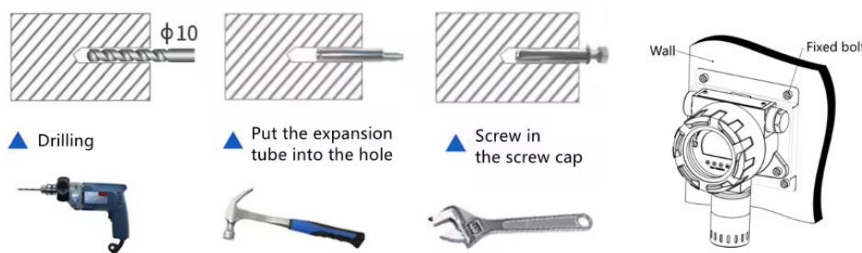
### Installation Requirements:

- When detecting lighter-than-air gases, place the detector 30 cm away from the ceiling.
- When detecting specific air weight, place the detector 30 cm away from the ground.
- The controller can be placed 1.6 m from the ground.



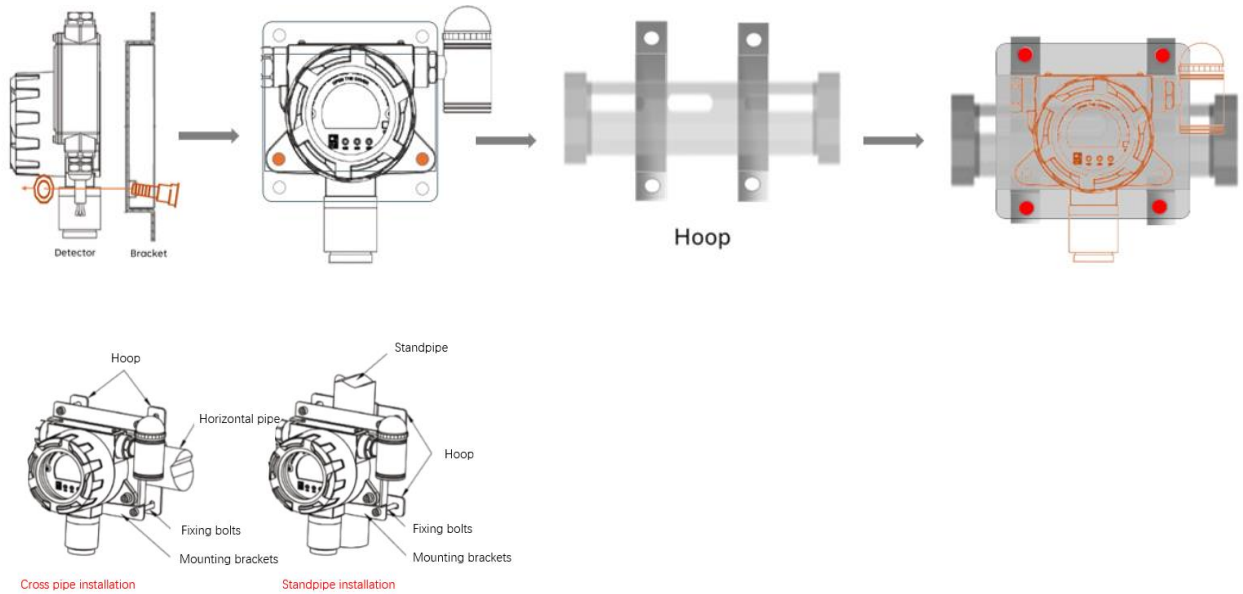
## Wall Mounting

When installing the expansion screw, first punch a hole in the wall or other fixed plane, put the expansion plug into the hole screw in the screw cap to expand the expansion plug, then remove the screw cap to install the device, and finally screw in the screw cap to fix the device.



## Pole Installation

- Select a suitable mounting location to ensure that it can support the weight of holding pole and devices.
- Mount the detector on the bracket and use M6 fixing bolts to fasten it to the surface of the bracket.
- Place the hoop over the holding pole so that the ends of the hoop align with the mounting bracket. Use the fixing bolts to secure the ends of the hoop to the mounting bracket. Tighten the bolts gradually to ensure that the hoop is evenly stressed.
- Tighten all fixing bolts to ensure that the hoop is securely fastened to the bracket.

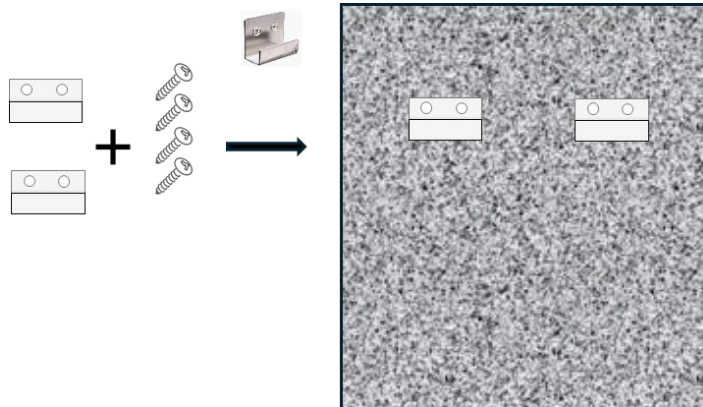


## Note :

- For outdoor installation, the instrument should be installed upwind of the leakage point and at a suitable distance from the leakage point of the gas to be measured
- For indoor installations, if the source of leakage is outdoors, the instrument is to be installed at the air intake.
- The number of instruments should be selected to achieve the best results, depending on the conditions of the potential gas leakage points to be measured, the frequency of personnel presence, and the duration of stay.
- The instrument should be protected from radiation from high-temperature heat sources. Excessively high or low temperatures will affect the performance and longevity of the sensor.

## Gas Alarm Control Panel

Fix the hanging hook to the wall with expansion screws.



Just hang the box on the hanging hook and fix it in place.

