

# Lidar Occupancy Detector Datasheet



## Product Description

Lidar Occupancy detection sensor for detecting changes in the distance of objects in a narrow space to determine whether someone is there or not by TOF laser ranging technology.

Made of aluminum alloy, the shell is lighter, stronger and more beautiful.



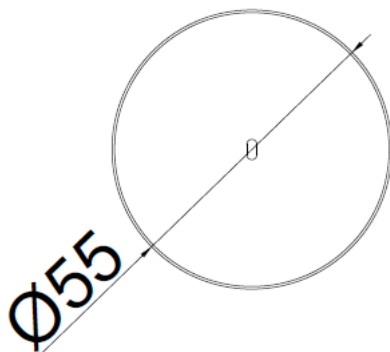
## Product Features

- Laser TOF distance measurement technology, accurate distance detection and adjustable platform threshold
- 320cm effective detection distance, high sensitivity sensing, suitable for toilet cubicle status detection
- LoRaWAN connectivity, no wiring required
- IP67 Protection Rated, adaptable to multiple environments
- Built-in intelligent algorithm to filter environmental interference to the maximum extent
- Magnetic top mounting for quick and easy deployment

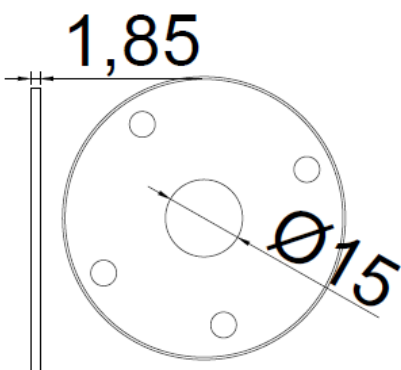
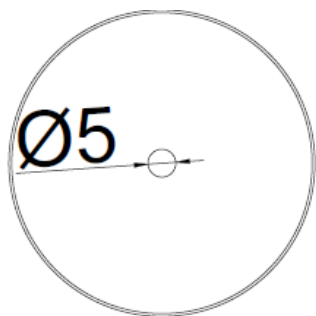


## Product Dimensions

Unit: mm



# Lidar Occupancy Detector Datasheet



## Specifications

Probe	4M Laser Detection Module
Detection Accuracy	10mm
Scan Speed	35MS
Operating Temp.	0 ~ 50°C
Operating Humidity	5% ~ 80% RH (non-condensing)
Power Consumption	2.5W
Ingress Protection	IP67
Material	ABS
Dimension	Φ55*10mm,60g
Detection Distance	320cm
Installation	Magnetic ceiling mounting Installation Height: 200cm-320cm

